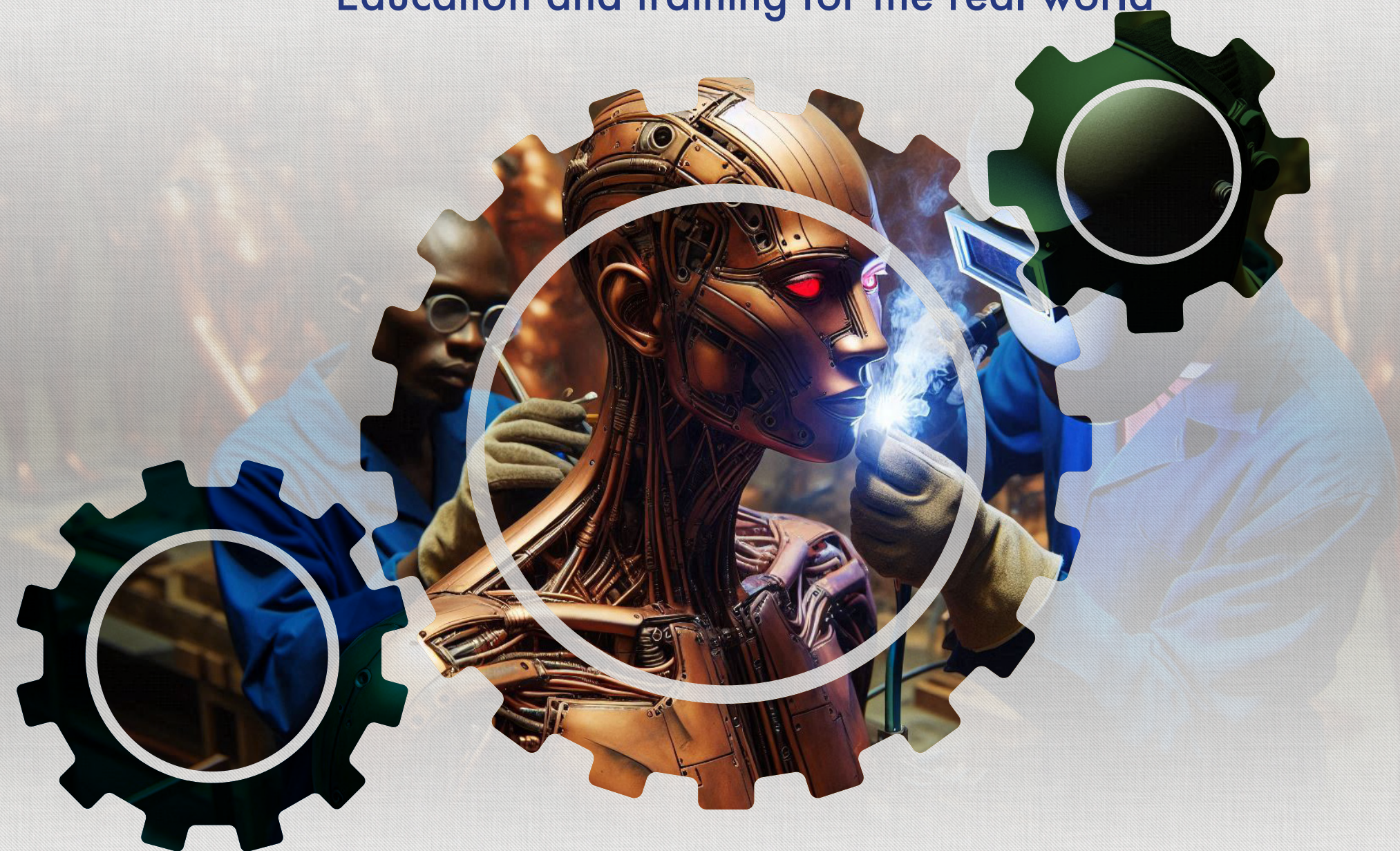




THE TECHNICAL UNIVERSITY OF KENYA

Education and training for the real world



UNDERGRADUATE AND DIPLOMA MODULE II PROGRAMMES

The Technical University of Kenya (TU-K) is a premier institution in technological education and training in Kenya. The University offers a diverse range of programmes at the Postgraduate, Undergraduate, and Diploma levels. Beyond academic instruction, TU-K is strongly committed to research, innovation, and community engagement, with a particular emphasis on the practical application of technological knowledge to address real-world societal challenges.

The University maintains a clear and structured policy on credit transfers for diploma holders. Candidates possessing a diploma equivalent to one offered at TU-K may be exempted from the first two years of study. However, they must complete any courses from those years that were not previously covered in their studies, subject to the approval of the University Senate.

TU-K has adopted a fully digitised and paperless application system—streamlining the process from initial application to final registration. Prospective students are therefore encouraged to apply online for the programmes listed below.

STARTING
SEPTEMBER
2025

COURSE TITLE	REQUIREMENTS	DURATION
FACULTY OF ENGINEERING AND THE BUILT ENVIRONMENT		
Department of Architecture, Design and Planning		
Bachelor of Architectural Studies/ Bachelor of Architecture	• KCSE Mean Grade C+ (plus), with C+ in Mathematics, C+ in Physics, and C+ in English/ Kiswahili	4 years (BAS); 2 years (B.Arch.) Integrated)
Diploma in Technology (Architecture)	• KCSE Mean Grade C, with C in Mathematics, C in Physics and C in English/Kiswahili	3 years (Integrated)
Department of Chemical and Biosystems Engineering		
Bachelor of Engineering in Biosystems and Environmental Engineering	• KCSE Overall minimum mean grade C+ with Mathematics C+, Physics C+, Chemistry C+, Biology = C, English = C+ OR • A level Minimum 2 principals in Mathematics and Physics; Subsidiary in Chemistry; and Credit pass in English and Biology at O level	5 years (Integrated)
Bachelor of Engineering (Chemical Engineering)	• KCSE Mean Grade C+ (plus) with C+ (Plus) in Maths A, C+ (Plus) in Physics, C+ (Plus) in Chemistry and C+ (Plus) in Eng./Kis. OR • A level Minimum 2 principals in Mathematics and Physics; Subsidiary in Chemistry; and Credit pass in English at O level	5 years (Integrated)
Bachelor of Technology (Chemical Engineering)	• KCSE Mean Grade C+ (plus) with C+ (Plus) in Maths A, C+ (Plus) in Physics, C+ (Plus) in Chemistry and C+ (Plus) in Eng./Kis. OR • KCSE Mean Grade C- (Minus) and Diploma in Technology in Chemical Engineering Technology or equivalent	4 years (Integrated) 3 years (Part-time)
Diploma in Technology (Chemical Engineering Technology)	• KCSE Mean Grade C -(minus) OR • KCSE Mean grade of D + (plus) and craft Certificate in Chemical Engineering or related areas	3 years (Integrated)
Department of Construction and Property Studies		
Bachelor of Building Surveying and Management	• KCSE Mean Grade C+ (plus), with C+ in Mathematics and pass in Physics OR • KCSE Mean Grade C- (Minus) and Diploma in Technology in Building Surveying and Management; Real Estate or equivalent	4 years (Integrated programme) 3 years (Part-time)
Bachelor of Built Environment (Construction Management)	• KCSE Mean Grade C+ (plus), with C+ (plus) in Mathematics, C+ (Plus) in Eng/Kis and C+ (plus) in Physics	4 years (Integrated programme)
	• Diploma in Technology in Quantity Surveying, Building Construction, Civil Engineering, Architecture with a credit pass and KCSE Mean Grade C- (Minus) OR • TEP Diploma in Building Construction, Civil Engineering, Architecture, Quantity Surveying or equivalent with at least 2 years relevant work experience, with a credit pass and Mean Grade C- (Minus)	3 years (Part-time)
Bachelor of Quantity Surveying	• KCSE Mean Grade C+ (plus), with C+ in Mathematics, C+ in Physics and C+ in English/ Kiswahili OR • Diploma in Quantity Survey, with a credit pass and KCSE Mean Grade C- (minus)	4 years (Integrated programme) 3 years (Part-time or Integrated)
Bachelor of Technology (Building Construction)	• KCSE Mean Grade C+ (plus), with C (plain) in Mathematics, C+ (Plus) in Eng/Kis and C (plain) in Physics OR • KCSE Mean Grade C- (Minus) and Diploma in Technology in either: Building Technology, Civil Engineering, Quantity Surveying or Architecture or equivalent or TEP Diploma in the above areas with a Credit pass.	4 years (Integrated programme) 3 years (Part-time)
Bachelor of Real Estate	• KCSE Mean Grade C+ (plus), with C+ in Mathematics and pass in Physics OR • KCSE Mean Grade C- (Minus) and Diploma in Technology in Real Estate or equivalent or TEP Diploma in the above areas,	4 years (Integrated programme) 3 years (Part-time)
Diploma in Technology (Real Estate)	• KCSE Mean Grade C -(minus) OR • KCSE Mean grade of D + (plus) and craft Certificate in real estate or related areas	3 years (Integrated programmes)
Diploma in Technology (Quantity Surveying)	• KCSE Mean Grade C (Plain) together with C (plain) in Maths, Physics and Eng./Kis.	
Integrated Programmes will be delivered during the day on weekdays, alongside Government-Sponsored (KUCCPS) students. These programmes follow a full-time study mode and are ideal for learners who can commit to regular daytime classes. Part-Time Programmes are designed to accommodate working professionals and other individuals with daytime commitments. These classes are scheduled in the evenings during weekdays and on weekends, offering flexible learning opportunities without compromising academic quality.		

COURSE TITLE	REQUIREMENTS	DURATION
Diploma in Technology (Construction Management)	• <i>KCSE Mean Grade C -(minus) OR</i> • <i>KCSE Mean grade of D + (plus) and craft Certificate in construction management or related areas</i>	3 years (Integrated programmes)
Diploma in Technology (Building Construction)	• <i>KCSE Mean Grade C -(minus) OR</i> • <i>KCSE Mean grade of D + (plus) and craft Certificate in building construction or related areas</i>	3 years (Integrated programmes)
Department of Civil and Resource Engineering		
Bachelor of Engineering (Civil Engineering)	• <i>KCSE Mean Grade C+ (plus) with C+ (Plus) in Maths A, C+ (Plus) in Physics, C+ (Plus) in Chemistry and C+ (Plus) in Eng./Kis.</i> • <i>A level Minimum 2 principals in Mathematics and Physics; Subsidiary in Chemistry; and Credit pass in English at O level</i>	5 years (Integrated programme)
Bachelor of Technology (Civil Engineering)	• <i>KCSE Mean Grade C- (Minus) and Diploma in Technology in either: Civil Engineering, Highway Engineering, Water Engineering, Building Construction or equivalent or TEP Diploma in the above areas,</i>	3 years (Part-time)
Diploma in Technology (Civil Engineering)	• <i>KCSE Mean Grade C -(minus) OR</i> • <i>KCSE Mean grade of D + (plus) and craft Certificate in Civil Engineering</i>	3 years (Integrated programme)
Certificate in Civil Engineering	• <i>KCSE Mean Grade of D+(Plus) and above including any other relevant qualification</i>	1 year
Certificate in Fire Engineering	• <i>KCSE Mean Grade of D+(Plus) and above including any other relevant qualification</i>	1 year
Department of Electrical and Electronics Engineering		
Bachelor of Engineering (Electrical and Electronic Engineering)	• <i>KCSE Mean Grade C+ (plus) with C+ (Plus) in Maths A, C+ (Plus) in Physics, C+ (Plus) in Chemistry and C+ (Plus) in Eng./Kis.</i>	5 years (Integrated programme)
Bachelor of Engineering Technology (Electrical and Electronic Engineering Technology)	• <i>Diploma in Technology (Electrical and Electronic Engineering Technology) together with KCSE Mean Grade C- (Minus)</i>	3 years (Part-time)
	• <i>KCSE Mean Grade C- (Minus) and Diploma in Technology in Electrical and Electronic Engineering Technology or its equivalent recognised by senate of TU-K or TEP Diploma in the above disciplines.</i>	3 years (Part-time)
Diploma in Technology (Electrical and Electronic Engineering)	• <i>KCSE Mean Grade C -(minus) OR</i> • <i>KCSE Mean grade of D + (plus) and craft Certificate in Electrical and Electronic engineering</i>	3 years (Integrated programme)
Department of Mechanical and Aerospace Engineering		
Bachelor of Engineering (Aeronautical Engineering)	• <i>KCSE Mean Grade C+ (plus) with C+ (Plus) in Maths A, C+ (Plus) in Physics, C+ (Plus) in Chemistry and C+ (Plus) in Eng./Kis.</i>	5 years (Integrated)
Bachelor of Engineering (Mechanical Engineering)	• <i>KCSE Mean Grade C+ (plus) with C+ (Plus) in Maths A, C+ (Plus) in Physics, C+ (Plus) in Chemistry and C+ (Plus) in Eng./Kis.</i>	5 years (Integrated programme)
Bachelor of Engineering Technology (Mechanical Engineering Technology)	• <i>KCSE Mean Grade C- (Minus) and Diploma in Technology in Mechanical Engineering Technology OR</i> • <i>TEP Diploma in Mechanical Engineering or equivalent with at least 2 years relevant work experience, together with Mean Grade C- (Minus)</i>	3 years (Part-time)
Diploma in Technology (Mechanical Engineering Technology): • <i>Manufacturing Engineering</i> • <i>Industrial Plant and Energy Engineering</i> • <i>Structural Fabrication and Metallurgical Engineering</i> • <i>Refrigeration and Air Conditioning Engineering:</i> • <i>Mechatronic Engineering</i> • <i>Automotive and Autotronic Engineering</i>	• <i>KCSE Mean Grade C -(minus) OR</i> • <i>KCSE Mean grade of D + (plus) and craft Certificate in mechanical engineering</i>	3 years (Integrated)
Diploma in Technology (Aeronautical Engineering Technology)	• <i>KCSE Mean Grade C (plain) with C- (minus) in Maths A, C- (Minus) in Physics and C- (Minus) in Eng</i>	3 years (Integrated)
<i>Integrated Programmes will be delivered during the day on weekdays, alongside Government-Sponsored (KUCCPS) students. These programmes follow a full-time study mode and are ideal for learners who can commit to regular daytime classes.</i> <i>Part-Time Programmes are designed to accommodate working professionals and other individuals with daytime commitments. These classes are scheduled in the evenings during weekdays and on weekends, offering flexible learning opportunities without compromising academic quality.</i>		

COURSE TITLE	REQUIREMENTS	DURATION
Department of Surveying and Spatial Sciences		
Bachelor of Engineering (Geospatial Engineering)	• <i>KCSE Mean Grade C+ (plus) with C+ (Plus) in Maths A, C+ (Plus) in Physics, and C (plain) in Geography</i>	5 years (Integrated)
Bachelor of Science (Land Administration)	• <i>KCSE Mean Grade C+ (plus), with C+ in Mathematics and pass in Physics</i>	5 years (Integrated)
Bachelor of Technology <ul style="list-style-type: none"><i>Surveying Technology</i><i>Geo-information Technology</i>	• <i>KCSE Mean Grade C+ (plus) with C+ (Plus) in Maths A, C+ (Plus) in Physics and C (plain) in Geography</i>	4 years (Integrated)
	• <i>KCSE Mean Grade C- (Minus) and Diploma in Technology in Geo-information Technology, Surveying Technology or equivalent</i>	3 years (Part-time)
Diploma in Technology in: - <ul style="list-style-type: none"><i>Geo-information Technology</i><i>Surveying Technology</i>	• <i>KCSE Mean Grade C (Plain) with C- (minus) in Maths, C- (Minus) Physics and English OR KCSE Mean grade of D+ (plus) and craft Certificate in Land Surveying or Cartography</i>	3 years (Integrated)

FACULTY OF APPLIED SCIENCES AND TECHNOLOGY		
Department of Biological and Life Sciences		
Bachelor of Technology (Applied Biology)	• <i>KCSE Mean Grade C+ (plus) with C+ (Plus) in Biology, C (Plain) in Maths A and C (Plain) in Chemistry</i> • <i>KCSE Mean Grade C- (Minus) and Diploma in Technology in Applied Biology or equivalent</i>	4 years (Integrated programme) 3 years (Part time)
Bachelor of Technology (Biotechnology)	• <i>KCSE Mean Grade C+ (plus) with C+ (Plus) in Biology, C (Plain) in Maths A and C (Plain) in Chemistry</i> • <i>KCSE Mean Grade C- (Minus) and Diploma in Technology in Biotechnology or equivalent</i>	4 years (Integrated programme) 3 years (Part-time)
Bachelor of Technology in Ecology and Conservation Biology	• <i>KCSE Mean Grade C+ (plus) with C+ in Biology and C+ in Chemistry and attendance in Mathematics/Physics, OR</i> • <i>KCSE Mean Grade C- (minus) and Diploma in: Ecology and Conservation Biology / Applied Biology/ Science Laboratory Technology/ Biotechnology and Industrial Microbiology or equivalent</i>	4 years 3 years
Bachelor of Technology (Food Science and Technology)	• <i>KCSE Mean Grade C+ (plus) with C (Plain) in Biology/Agriculture/HSC, C (Plain) in Chemistry and C (Plain) in Mathematics</i> • <i>KCSE Mean Grade C- (Minus) and Diploma in Technology in Food Technology or equivalent</i>	4 years (Integrated programme) 3 years (Part-time)
Bachelor of Science (Biochemistry)	• <i>KCSE Mean Grade C+ (plus) with C+ (Plus) in Biology, C (Plain) in Maths A and C (Plain) in Chemistry</i>	4 years (Integrated programme)
Bachelor of Technology (Science Laboratory Technology)	• <i>KCSE Mean Grade C+ (plus) with C+ (Plus) in Biology and C+ (Plus) in Maths A/ Physics</i>	4 years (Integrated programme)
Bachelor of Technology (Science Laboratory Technology)	• <i>KCSE Mean Grade C- (Minus) and Diploma in Technology in Science Laboratory Technology or equivalent</i>	3 years (Integrated programme)
Diploma in Technology (Industrial and Applied Biology)	• <i>KCSE Mean Grade C- (minus) OR</i> • <i>KCSE Mean great of D(plain) with a craft certificate in Biology related course</i>	3 years (Part-time)
Diploma in Technology (Biotechnology)	• <i>KCSE Mean Grade C- (minus) OR</i> • <i>KCSE Mean great of D(plain) with a craft certificate in Biotechnology related course</i>	3 years (Part-time)
Diploma in Technology (Biochemistry)	• <i>KCSE Mean Grade C- (minus) OR</i> • <i>KCSE Mean great of D(plain) with a craft certificate in related course area</i>	3 years (Part-time)
Diploma in Technology (Ecology and Conservation Biology)	• <i>KCSE Mean Grade C- (minus) OR</i> • <i>KCSE Mean great of D(plain) with a craft certificate in related course area</i>	3 years (Part-time)
Diploma in Technology (Food Science and Technology)	• <i>KCSE Mean Grade C- (minus)</i>	3 years (Integrated)
Department of Computing and Information Technologies		
Bachelor of Technology (Information Technology)	• <i>KCSE Mean Grade C+ (plus) with C (Plain) in Maths A, C (Plain) in Eng/Kisw</i> • <i>KCSE Mean Grade C- (Minus) and Diploma in Technology in Information Technology or equivalent</i>	4 years (Integrated) 3 years
<i>Integrated Programmes will be delivered during the day on weekdays, alongside Government-Sponsored (KUCCPS) students. These programmes follow a full-time study mode and are ideal for learners who can commit to regular daytime classes.</i> <i>Part-Time Programmes are designed to accommodate working professionals and other individuals with daytime commitments. These classes are scheduled in the evenings during weekdays and on weekends, offering flexible learning opportunities without compromising academic quality.</i>		

COURSE TITLE	REQUIREMENTS	DURATION
Bachelor of Technology (Computer Technology)	• <i>KCSE Mean Grade C+ (plus) with C+ (Plus) in Maths A, C+ (Plus) in Physics and C (Plain) in Eng/Kisw</i> • <i>KCSE Mean Grade C- (Minus) and Diploma in Technology in Computer Technology or equivalent</i>	4 years (Integrated) 3 years
Bachelor of Technology (Communication and Computer Networks)	• <i>KCSE Mean Grade C+ (plus) with C+ (Plus) in Maths A, C+ (Plus) in Physics and C (Plain) in Eng/Kisw</i> • <i>KCSE Mean Grade C- (Minus) and Diploma in Technology in Computer Networks or equivalent</i>	4 years (Integrated) 3 years
Diploma in Technology (Information Technology)	• <i>KCSE Mean Grade C- (minus) OR</i> • <i>KCSE Mean great of D(plain) with a craft certificate in computer related course area</i>	3 years (Integrated)
Diploma in Technology in: <ul style="list-style-type: none"><i>Computer Technology</i><i>Communication and Computer Networks</i>	• <i>KCSE Mean Grade C- (minus) OR</i> • <i>KCSE Mean great of D(plain) with a craft certificate in IT related course area</i>	3 years (Integrated)

Department of Chemistry and Materials Science		
Bachelor of Technology (Industrial and Applied Chemistry)	• <i>KCSE Mean Grade C+ (plus) with C+ (Plus) in Chemistry, C (Plain) in Maths A, and C (Plain) in Physics</i> • <i>KCSE Mean Grade C- (Minus) and Diploma in Technology in Analytical/Industrial Chemistry or equivalent</i>	4 years (Integrated)
Bachelor of Technology (Medicinal Chemistry)	• <i>KCSE Mean Grade C+ (plus) with C+ (Plus) in Chemistry, Maths/Physics, Biology and any Group III/IV/V OR</i>	4 years (Integrated)
	• <i>KCSE Mean Grade C- (minus) and Diploma in Technology in Analytical/Industrial Chemistry or equivalent</i>	3 years (Part-time)
Diploma in Technology Applied Chemistry (Analytical Chemistry)	• <i>KCSE Mean Grade C- (minus) OR</i> • <i>KCSE Mean great of D(plain) with a craft certificate in chemistry related course area</i>	3 years (Integrated)
Diploma in Technology Applied Chemistry (Industrial Chemistry)	• <i>KCSE Mean Grade C- (minus) OR</i> • <i>KCSE Mean great of D(plain) with a craft certificate in chemistry related course area</i>	3 years (Part-time)

Department of Health and Biomedical Sciences		
Bachelor of Technology (Community Health and Wellness)	• <i>KCSE Mean Grade C+ (plus) with C (Plain) in Biology, C (Plain) in Chemistry, C (Plain) in Maths/Physics and C (Plain) in English/ Kiswahili</i>	4 years (Integrated)
Bachelor of Science (Public Health)	• <i>KCSE Mean Grade C+ (plus) with C+ and C (Plain) in Biology, Chemistry, C (Plain) in Maths/Physics/ Geo and C (Plain) in English/ Kiswahili OR</i> • <i>Mean Grade C- with Diploma in Public Health or equivalent</i>	4 years (Integrated)
Bachelor of Technology in Health Systems Management	• <i>Holders of KCSE with an aggregate of C+ (C plus)</i> • <i>Candidates should have obtained at least a C+ in the following cluster subjects of the KCSE examinations:</i> Cluster Subjects <i>1. Mathematics/Physics</i> <i>2. English/Kiswahili</i> <i>3. Biology/Chemistry</i> <i>4. History and Government/Geography/ Christian Religious Education/Islamic Religious Education/ Hindu Religious Education.</i> Alternative requirements • <i>A-Levels or Equivalent: A candidate should have a minimum of two (2) principal passes in Chemistry or Biology and a subsidiary level pass in any other subject with a credit pass in English at O-Level and General Paper.</i> • <i>Holders of diploma qualifications in health-related disciplines with a mean grade of C plain in KCSE or equivalent shall be admitted into year one of study</i> • <i>Mean grade of C- (minus) at KCSE and progressed from certificate to Diploma in health-related disciplines at any institutions recognized by the University Senate.</i>	12 Semesters

Integrated Programmes will be delivered during the day on weekdays, alongside Government-Sponsored (KUCCPS) students. These programmes follow a full-time study mode and are ideal for learners who can commit to regular daytime classes.
Part-Time Programmes are designed to accommodate working professionals and other individuals with daytime commitments. These classes are scheduled in the evenings during weekdays and on weekends, offering flexible learning opportunities without compromising academic quality.

COURSE TITLE	REQUIREMENTS	DURATION
Bachelor of Technology (Nutrition and Dietetics)	• <i>Credit Pass in a relevant Diploma or Pass in a relevant Diploma with two years working experience</i>	3 years
Bachelor of Science in Medical Laboratory Sciences	• <i>KCSE Mean Grade C+ (Plus) with C+ in English, Kiswahili, Biology, Chemistry, Physics or Mathematics</i>	4 years (Integrated)
Bachelor of Science (Nutrition and Dietetics)	• <i>KCSE Mean Grade C+ (plus) with C (Plain) in Biology, C (Plain) in Chemistry, C (Plain) in Maths/Physics/ Geo and C (Plain) in English/ Kiswahili</i>	4 years (Integrated)
Diploma in Community Health and Wellness	• <i>KCSE Mean Grade C- (minus)</i>	3 years (Integrated)
Diploma in Pharmaceutical Technology	• <i>KCSE Mean Grade C (plain) with C (Plain) in Biology, Chemistry, Maths/Physics, English/ Kiswahili</i>	3 Year (Integrated full time)
Diploma in Technology (Health Records Information Technology)	• <i>KCSE Mean Grade C (plain) with C- in the following cluster subjects: Biology, Chemistry, Maths/Physics/ Geo, English/Kiswahili or any group III/IV/V subjects</i>	3 years
Diploma in Public Health		
Diploma in Technology (Nutrition and Dietetics)	• <i>KCSE Mean Grade C- (Minus) with D+ (Plus) in Chem/Physical Sciences, Bio/Biological Sciences Eng/Kis OR D (Plain) in Phy/Maths/ HSC/AGRIC/ GSC</i> OR • <i>craft Certificate in a related course, with KCSE D+(plus)</i>	3 years (Integrated)
Department of Mathematics and Statistics		
Bachelor of Technology (Applied Statistics)	• <i>KCSE Mean Grade C+ (plus) with C+ (Plus) in Maths Alternative A</i> • <i>Diploma in Technology in Applied Statistics and KCSE Mean Grade C- (Minus)</i> • <i>Diploma in Technology in Actuarial Science and KCSE Mean Grade C- (Minus)</i>	4 years (Integrated) 3 Year (Integrated) 3 Year (Integrated)
Bachelor of Science (Mathematics)	• <i>KCSE Mean Grade C+ (plus) with C+ (Plus) in Maths Alternative A</i>	4 years (Integrated)
Diploma in Technology in: - • <i>Applied Statistics</i> • <i>Actuarial Science</i>	• <i>KCSE Mean Grade C- (minus) OR</i> • <i>KCSE Mean great of D(plain) with a craft certificate in related course area</i>	3 years (Integrated)
Department of Physics, Earth and Environmental Sciences		
Bachelor of Technology (Technical and Applied Physics)	• <i>KCSE Mean Grade C+ (plus) with C+ (Plus) in Physics and C (plain) in Maths A</i> • <i>KCSE Mean Grade C- (Minus) and Diploma in Technology in Technical and Applied Physics or equivalent</i>	4 years (Integrated programme) 3 years (Part time)
Bachelor of Technology (Environmental Resource Management)	• <i>KCSE mean Grade C+ (plus) with C+ (plus) in Biology/Agric. and C+ (plus) in Chemistry/ Geography</i> • <i>Diploma in Technology in relevant areas from recognized institution</i>	4 years 3 years (Part time)
Bachelor of Science Geology and Mining Technology	• <i>KCSE Mean Grade C+ (plus) with C+ (Plus) in Physics, C+ (plus) in Maths A and Geo/Chem C (plain)</i> • <i>KCSE Mean Grade C- (Minus) and Diploma in Geology and Mining or equivalent</i>	4 years (Integrated programme) 3 years (Part time)
Diploma in Technology (Environmental Resource Management)	• <i>KCSE Mean Grade C- (minus) OR</i> • <i>KCSE Mean great of D(plain) with a craft certificate in Biology related course</i>	3 years (Integrated)
Diploma in Technology (Technical and Applied Physics)	• <i>KCSE Mean Grade C- (minus) OR</i> • <i>KCSE Mean great of D(plain) with a craft certificate in related course areas.</i>	3 years (Integrated)
Bachelor of Technology in Integrated Water Resources Management.	• <i>KCSE Mean Grade C+ (plus) with C+ (Plus) in Maths, Chemistry, Physics/Geography, Biology/ any Group III/IV/V</i> • <i>KCSE Mean Grade C- (Minus) and Diploma in IWRM of Technical University and with a distinction or credit or any such qualification from the Technical University of Kenya or any other institutions accepted and recognized by the Senate of the Technical University of Kenya</i>	4 years (Integrated programme) 3 years (Part time)
<i>Integrated Programmes will be delivered during the day on weekdays, alongside Government-Sponsored (KUCCPS) students. These programmes follow a full-time study mode and are ideal for learners who can commit to regular daytime classes.</i> <i>Part-Time Programmes are designed to accommodate working professionals and other individuals with daytime commitments. These classes are scheduled in the evenings during weekdays and on weekends, offering flexible learning opportunities without compromising academic quality.</i>		

COURSE TITLE	REQUIREMENTS	DURATION
Diploma in Integrated Water Resources Management.	• <i>KCSE Mean Grade C- (minus) OR</i> • <i>KCSE Mean great of D+ (plus) with a craft certificate in related course</i>	3 years (Integrated)

FACULTY OF SOCIAL SCIENCES AND TECHNOLOGY		
Department of Business and Management Studies		
Bachelor of Science (Accountancy)	• <i>KCSE Mean Grade C+ (plus) with C+ (Plus) in Maths A and C+ (Plus) in Eng./Kis. OR</i> • <i>Diploma in Accountancy and KCSE Grade C- (minus)</i>	4 years (Integrated) 3 years (Part-time)
Bachelor of Commerce: • <i>Accounting</i> • <i>Business Administration</i> • <i>Finance</i> • <i>Human Resource Management</i> • <i>Insurance</i> • <i>Logistics and Supply Chain Management</i> • <i>Marketing</i>	• <i>KCSE Mean Grade C+ (plus) with C (plain) in Maths A/B</i>	4 years (Integrated)
Bachelor of Business Studies: • <i>Business Administration</i> • <i>Human Resource Management</i> • <i>Logistics and Supply Chain Management</i> • <i>Sales and Marketing Management</i> • <i>International Business Management</i> • <i>Marketing</i> • <i>Business Management</i>	• <i>KCSE Mean Grade C- (Minus) and Diploma in Technology in any Business area</i>	3 years (Part-time)
Bachelor of Economics	• <i>KCSE Mean Grade C+ (Plus) and C+ (Plus) in Maths A and C (Plain) In English/Kiswahili</i>	4 years (Integrated)
Bachelor of Technology (Business Information Technology)	• <i>KCSE Mean Grade C+ (plus) with C (plain) in Maths A/B.</i> • <i>Higher/Advanced Diploma in Information Technology or Computer Science OR 3-year Dip. Tech. Business Information Technology (BIT), Diploma in Information Technology, Computer Science OR its equivalent recognised by senate of TU_K together with KCSE Mean Grade C- (Minus)</i>	4 years (Integrated)
		3 years (Part-time)
Bachelor of Technology (Office Administration and Technology)	• <i>KCSE Mean Grade C+ (plus) with C (plain) in Maths A/B.</i> • <i>KCSE Mean Grade C- (Minus) and Diploma in Technology in Secretarial Studies or equivalent</i>	4 years (Integrated programme)
		3 years (Part-time)
Diploma in Business Information Technology	• <i>KCSE Mean Grade C- (minus) OR</i> • <i>KCSE Mean great of D(plain) with a craft certificate in business related courses</i>	3 years (Integrated programme)
Diploma in Entrepreneurship	• <i>KCSE Mean Grade C- (minus) OR</i> • <i>KCSE Mean great of D(plain) with a craft certificate in business related courses</i>	3 years (Part-time)
Diploma in Business Studies: • <i>Business Administration</i> • <i>Human Resource Management</i> • <i>Sales and Marketing Management</i> • <i>Procurement and Supply Chain Management</i>	• <i>KCSE Mean Grade C- (minus) OR</i> • <i>KCSE Mean great of D(plain) with a craft certificate in business related courses</i>	3 years (Integrated programme)
Diploma in Accountancy	• <i>KCSE Mean Grade C- (minus) OR</i> • <i>KCSE Mean great of D(plain) with a craft certificate in business related courses</i>	3 years (Part-time)
Diploma in Office Administration: • <i>Legal Secretarial</i> • <i>Medical Secretarial</i> • <i>Business Secretarial</i> • <i>Foreign Language Secretarial</i>	• <i>KCSE Mean Grade C- (minus) OR</i> • <i>KCSE Mean great of D(plain) with a craft certificate in business related courses</i>	3 years (Part-time)
Department of Creative Arts and Media		
Bachelor of Arts in Visual Art	• <i>KCSE Mean Grade of C+ (Plus) or equivalent, with C+ (Plus) in Art and Design. In the absence of Art and Design, the candidate shall be required to present a portfolio of artworks OR</i> • <i>KCSE Mean Grade of C (Plain) or equivalent diploma in the relevant field of study from a recognised institution. A portfolio of proven experience in Fine Art is to be presented to the Department of Visual Arts and Photography.</i>	
<i>Integrated Programmes will be delivered during the day on weekdays, alongside Government-Sponsored (KUCCPS) students. These programmes follow a full-time study mode and are ideal for learners who can commit to regular daytime classes.</i> <i>Part-Time Programmes are designed to accommodate working professionals and other individuals with daytime commitments. These classes are scheduled in the evenings during weekdays and on weekends, offering flexible learning opportunities without compromising academic quality.</i>		

COURSE TITLE	REQUIREMENTS	DURATION
Bachelor of Technology (Design)	<ul style="list-style-type: none"> KCSE Mean Grade C+ (plus), with C (Plain) in Mathematics, C+ in Eng./Kis and C (Plain) in Physics KCSE Mean Grade C- (Minus) and Diploma in Technology in Design or equivalent 	4 years (Integrate) 3 years (Part-time)
Bachelor of Arts in Theatre Studies	<ul style="list-style-type: none"> KCSE Mean Grade C+ (Plus) Be a holder of Kenya advanced certificate of education (or equivalent examination) certificate with a minimum of two principal passes and one subsidiary pass OR Be a holder of a diploma or professional certificate in relevant discipline from an institution recognized by the senate of the university; OR Be a holder of any other qualification accepted by the senate of the university 	4 years
Bachelor of Arts Music Studies	<ul style="list-style-type: none"> Shall be an aggregate of C+ in the Kenya Certificate of Secondary Education (KCSE); At least C+ in Music Holders of Diploma in Music of the Technical University of Kenya with at least a Credit (Upper Division) pass; Holders of the Diploma in Music Studies of the Technical University of Kenya 	4 years
Bachelor of Technology (Journalism and Mass Communication)	<ul style="list-style-type: none"> KCSE Mean Grade C+ (plus) with C+ (plus) in Eng./ Kis. 	4 years (Integrated programme)
	<ul style="list-style-type: none"> KCSE Mean Grade C- (Minus) and Diploma in Technology in Journalism and Mass Communication or its equivalent recognised by senate of TU_K 	3years (Part-time)
Bachelor of Music	<ul style="list-style-type: none"> KCSE Mean Grade C+ (plus) with C+ (plus) in Music 	4 years (Integrated programme)
	<ul style="list-style-type: none"> KCSE Mean Grade C- (Minus) and Diploma in Technology in Music or equivalent 	3 years (Integrated programme)
Bachelor of Technology (Printing Technology)	<ul style="list-style-type: none"> KCSE Mean Grade C+ (plus) with C (plain) in Maths A/B, Physics, English/Kiswahili, Any Group III/IV/V OR 	4 years (Integrated programme)
	<ul style="list-style-type: none"> Diploma in Technology in Printing Technology and KCSE Mean Grade C- (Minus) 	3 years (Part-time)
Bachelor of Philosophy in Technology (Printing)	<ul style="list-style-type: none"> KCSE Mean Grade C- (Minus) and Higher Diploma in Printing Technology or its equivalent recognised by senate of TU-K 	2 ¹ / ₂ years (Part-time)
Diploma in Technology in Design	<ul style="list-style-type: none"> KCSE Mean Grade C- (minus) OR KCSE Mean great of D(plain) with a craft certificate in design related courses 	3 years (Part-time)
Diploma in Technology (Journalism and Mass Communication)	<ul style="list-style-type: none"> KCSE Mean Grade C- (minus) OR KCSE Mean great of D(plain) with a craft certificate in journalism related courses 	3 years (Integrated programme)
Diploma in Music	<ul style="list-style-type: none"> KCSE C- (minus) with C-(Minus) in music OR Grade 5 theory and/or practical of ABRSM, LCM or equivalent body together with KCSE D+ (Plus). Involvement in Music Festivals, Church Music/ Gospel Music performance will be an added advantage. 	3 years (Integrated programme)
Diploma in Technology (Printing)	<ul style="list-style-type: none"> KCSE Mean Grade C- (minus) OR KCSE Mean great of D(plain) with a craft certificate in related course areas. 	3 years (Integrated programme)
Certificate in Printing Technology	<ul style="list-style-type: none"> KCSE Mean Grade D+(Plus) or Equivalent 	1 year (2 Semesters)
Certificate in Packaging Technology	<ul style="list-style-type: none"> KCSE Mean Grade D+(Plus) or Equivalent 	1 year (2 Semesters)

Department of Hospitality and Human Ecology

Bachelor of Science in Tourism and Travel Management	<ul style="list-style-type: none"> KCSE Mean Grade C+ (plus) with C (plain) in Maths A/B and a pass in English/Kiswahili OR KCSE Mean Grade C- (Minus) and Diploma in Technology (Dip-Tech) in Tourism Management or equivalent 	4 Years (Integrated Program)
Bachelor of Science in Hospitality Management	<ul style="list-style-type: none"> KCSE Mean Grade C+ (plus) with C (plain) in Maths A/B and a pass in English/Kiswahili OR KCSE Mean Grade C- (Minus) and Diploma in Technology (Dip-Tech) in Hospitality Management or equivalent 	4 Years (Integrated Program)

Integrated Programmes will be delivered during the day on weekdays, alongside Government-Sponsored (KUCCPS) students. These programmes follow a full-time study mode and are ideal for learners who can commit to regular daytime classes.

Part-Time Programmes are designed to accommodate working professionals and other individuals with daytime commitments. These classes are scheduled in the evenings during weekdays and on weekends, offering flexible learning opportunities without compromising academic quality.

COURSE TITLE	REQUIREMENTS	DURATION
Bachelor of Technology in Hotel and Restaurant Management	<ul style="list-style-type: none"> KCSE Mean Grade C+ (plus) with C (plain) in Maths A/B and a pass in English/Kiswahili OR KCSE Mean Grade C- (Minus) and Diploma in Technology (Dip-Tech) in Hotel and Restaurant Management or equivalent OR KCSE Mean Grade D+ (Plus), Certificate and a Diploma in Hotel and Restaurant Management or equivalent 	4 Years (Integrated Program) 3 years (Part time)
Bachelor of Technology in Institutional Catering and Accommodation Management	<ul style="list-style-type: none"> KCSE Mean Grade C+ (plus) with C (plain) in Maths A/B and a pass in English/Kiswahili Group II or Group III, 2nd Group II or 2nd Group II or 2nd Group III or Group IV or Group V KCSE Mean Grade C- (Minus) and Diploma in Technology (Dip-Tech) in Institutional Catering and Accommodation Management or equivalent 	4 Years (Integrated Program) 3 years (Part time)
Bachelor of Science in Event and Convention Management	<ul style="list-style-type: none"> KCSE Mean Grade C+ (plus) OR KCSE Mean Grade C- (Minus) and Diploma in Technology (Dip-Tech) in Event and Convention Management or equivalent 	4 Years (Integrated)
Bachelor of Technology in Textile Technology	<ul style="list-style-type: none"> KCSE Mean Grade C+ (plus) with C (plain) in Chemistry OR Diploma in Technology in Textile Technology and KCSE Mean Grade C- (Minus) OR KCSE Mean Grade D+(Plus), Certificate and a Diploma in Technology in Textile Technology 	4 Years (Part-time) 3 Years (Part-time)
Bachelor of Arts in Social Work and Community Development	<ul style="list-style-type: none"> KCSE Mean Grade C+ (Plus) and a Pass in Eng/Kis, Maths A/B or Group II, Group III, 2nd Group II or 2nd Group III or Group IV/V OR KCSE Mean Grade C- (Minus) and Diploma in Social Work and Community Development or its equivalent recognised by senate 	4 Years (Integrated) 3 Years (Part-time)
Bachelor of Technology in Fashion Design	<ul style="list-style-type: none"> KCSE Mean Grade C+ (plus) with C (Plain) in Chemistry OR 3-year Diploma in Fashion Design from TUK or Equivalent together with KCSE Mean Grade C- (Minus) 	4 Years (Part-time) 3 Years (Part-time)
Bachelor of Science (Counselling Psychology)	<ul style="list-style-type: none"> KCSE Mean Grade C+ (Plus) OR KCSE Mean Grade C- (Minus) and Diploma in Technology in Counselling Psychology or its equivalent recognised by senate 	4 Years (Integrated programme) 3 Years (Part-time)
Diploma in Counselling Psychology	<ul style="list-style-type: none"> KCSE Mean Grade C- (minus) OR KCSE Mean great of D(plain) with a craft certificate in related course areas 	3 Years (Integrated)
Diploma in Social Work and Community Development		
Diploma in Technology (Fashion Design)	<ul style="list-style-type: none"> KCSE Mean Grade C- (minus) OR KCSE Mean great of D(plain) with a craft certificate in related course areas. 	3 Years (Integrated)
Diploma in Technology in Textile Technology	<ul style="list-style-type: none"> KCSE Mean Grade C- (minus) OR KCSE Mean great of D(plain) with a craft certificate in related course areas. 	3 Years (Integrated)
Diploma in Technology (Hairdressing and Beauty Therapy)	<ul style="list-style-type: none"> KCSE Mean Grade C- (minus) OR KCSE Mean great of D(plain) with a craft certificate in related course areas 	3 Years (Integrated)
Diploma in Technology in Tourism and Travel Management	<ul style="list-style-type: none"> KCSE Mean Grade C- (minus) OR KCSE Mean great of D(plain) with a craft certificate in related course areas. 	3 Years (Integrated)
Diploma in Technology in Event and Convention Management	<ul style="list-style-type: none"> KCSE Mean Grade C- (minus) OR KCSE Mean great of D(plain) with a craft certificate in related course areas 	3 Years (Integrated)
Diploma in Technology in Hotel and Restaurant Management	<ul style="list-style-type: none"> KCSE Mean Grade C- (minus) OR KCSE Mean great of D(plain) with a craft certificate in related course areas. 	3 Years (Integrated)
Diploma in Technology in Institutional Catering and Accommodation Management	<ul style="list-style-type: none"> KCSE Mean Grade C- (minus) OR KCSE Mean great of D(plain) with a craft certificate in related course areas. 	3 Years (Integrated)

Department of Information Science, Language and Communication Studies

Bachelor of Science (Information Science)	<ul style="list-style-type: none"> KCSE Mean Grade C+ (plus) with C (plain) in Maths A/B 	4 years (Integrated programme)
---	---	--------------------------------

Integrated Programmes will be delivered during the day on weekdays, alongside Government-Sponsored (KUCCPS) students. These programmes follow a full-time study mode and are ideal for learners who can commit to regular daytime classes.

Part-Time Programmes are designed to accommodate working professionals and other individuals with daytime commitments. These classes are scheduled in the evenings during weekdays and on weekends, offering flexible learning opportunities without compromising academic quality.

COURSE TITLE	REQUIREMENTS	DURATION
Bachelor of Arts in Communication Studies	<ul style="list-style-type: none">• <i>KCSE Mean Grade C+ (plus) with C+ (plus) in Eng./ Kis., Group III, Group IV or Group V</i> OR• <i>KCSE Mean Grade C- (minus) and Diploma in Journalism and Public Relations, Communication Studies, Business Administration and Sales and Marketing or equivalent</i> OR• <i>Higher Diploma in Human Resources, Public Relations, Communication Studies or equivalent</i>	4 years (Integrated programme)
Bachelor of Technology (Information Studies)	<ul style="list-style-type: none">• <i>KCSE Mean Grade C- (Minus) and Diploma in Technology in Library Information Technology, Archives and Records Management, Information Science or equivalent</i>	3 years (Part-time)
Diploma in Technology in: <ul style="list-style-type: none">• <i>Archives and Records Management</i>• <i>Library and Information Technology</i>	<ul style="list-style-type: none">• <i>KCSE Mean Grade C- (minus)</i> OR• <i>KCSE Mean great of D(plain) with a craft certificate in related course area</i>	3 years (Integrated programme)
Department of Liberal, Development and International Studies		
Bachelor of Arts (International Relations and Diplomacy)	<ul style="list-style-type: none">• <i>KCSE Mean Grade C+ (plus) with C+ (plus) in Eng./ Kis.</i>	4 years (Integrated programme)
	<ul style="list-style-type: none">• <i>KCSE Mean Grade C- (Minus) and Diploma in International Relations and Diplomacy or equivalent</i>	3 years (Part-time)
<i>Integrated Programmes will be delivered during the day on weekdays, alongside Government-Sponsored (KUCCPS) students. These programmes follow a full-time study mode and are ideal for learners who can commit to regular daytime classes.</i> <i>Part-Time Programmes are designed to accommodate working professionals and other individuals with daytime commitments. These classes are scheduled in the evenings during weekdays and on weekends, offering flexible learning opportunities without compromising academic quality.</i>		

COURSE TITLE	REQUIREMENTS	DURATION
Bachelor of Arts (Criminology and Security Management)	<ul style="list-style-type: none">• <i>KCSE Mean Grade C+ (Plus) with a Pass in Eng./ Kis., Math A/B or Group II, Group III, 2nd Group II/III or Group IV/V, OR</i>• <i>KCSE Mean Grade C- (Minus) and Diploma in Criminology or equivalent</i>	4 years (integrated) 3 years (Part-time)
Bachelor of Arts in Philosophy and Development Studies	<ul style="list-style-type: none">• <i>KCSE Mean Grade C+ (Plus) with a Pass in Eng./ Kis., Math A/B or Group II, Group III, 2nd Group II/III or Group IV/V, OR</i>• <i>KCSE Mean Grade C- (Minus) and Diploma in Development Studies or equivalent</i>	4 years (integrated) 3 years (Part-time)
Diploma in International Relations and Diplomacy	<ul style="list-style-type: none">• <i>KCSE Mean Grade C- (minus)</i>	3 years (Integrated Programmes)
Diploma in Disaster Management	<ul style="list-style-type: none">• <i>KCSE Mean Grade C- (minus)</i> OR• <i>KCSE Mean great of D(plain) with a craft certificate in related course area</i>	3 years (Part-time)
Diploma in Criminology and Security Studies	<ul style="list-style-type: none">• <i>KCSE Mean Grade C- (minus)</i> OR• <i>KCSE Mean great of D(plain) with a craft certificate in related course area</i>	3 years (Part-time)
Diploma in Legal Studies	<ul style="list-style-type: none">• <i>KCSE Mean Grade C (plain) with C+(plus) in English/Kiswahili OR</i>• <i>KCSE Mean Grade C- (minus) and C (plain) in English/Kiswahili together with Certificate in Criminology. Criminal Investigations, Disaster Management, Criminal Justice or Crime Prevention or equivalent</i>	3 years (Part-time)
<i>Integrated Programmes will be delivered during the day on weekdays, alongside Government-Sponsored (KUCCPS) students. These programmes follow a full-time study mode and are ideal for learners who can commit to regular daytime classes.</i> <i>Part-Time Programmes are designed to accommodate working professionals and other individuals with daytime commitments. These classes are scheduled in the evenings during weekdays and on weekends, offering flexible learning opportunities without compromising academic quality.</i>		





THE TECHNICAL UNIVERSITY OF KENYA
SCHOOL OF GRADUATE AND ADVANCED STUDIES

POSTGRADUATE
DEGREE PROGRAMMES

STARTING SEPTEMBER 2025

The Technical University of Kenya (TU-K) offers a variety of postgraduate programmes and is actively engaged in research and innovation, with a strong emphasis on the practical application of technological knowledge and skills to address societal challenges. The University invites applications from suitably qualified and interested candidates to enrol in the following postgraduate programmes:

PROGRAMME	ELIGIBILITY	DURATION	PROGRAMME	ELIGIBILITY	DURATION
Department of Biological and Life Sciences			Master of Technology in Applied Entomology	<ul style="list-style-type: none">At least a Second Class Honours (Upper Division) degree of TU-K in the relevant field or equivalent from a university recognised by the Senate of TU-K ORAt least a Second Class Honours (Lower Division) degree of TU-K or equivalent from a university recognised by the Senate of TU-K; with either at least two (2) years of relevant experience OR relevant Postgraduate Diploma with 1 year relevant work experience	2 years
Doctor of Philosophy in Entomology	<i>A holder of a Master's degree in any relevant field A holder of a Master's degree in a relevant field A Masters degree of TUK in a relevant field of Biology or equivalent from a university recognised by senate of TUK.</i>	3 years	Master of Science in Forensic Biochemistry	<ul style="list-style-type: none">At least a Second Class Honours (Upper Division) degree in Biological or related field of TU-K or its equivalent from a university recognised by the Senate of TU-K ORSecond Class Honours (Lower Division) degree in Biological or related field or its equivalent from a university recognised by the Senate of TU-K with either two (2) years relevant work experience OR a postgraduate diploma in relevant field of biology.	2 years
Doctor of Philosophy in Plant Taxonomy			Master of Science in Applied Parasitology		
Doctor of Philosophy in Biochemistry			Master of Science in Biochemistry		
Doctor of Philosophy in Biotechnology			Master of Science in Biotechnology		
Doctor of Philosophy in Bioinformatics			Master of Science in Immunology		
Doctor of Philosophy in Food Science and Technology			Master of Science in Microbiology		
Doctor of Philosophy in Wildlife Conservation Management			Master of Science in Food Science and Technology	<ul style="list-style-type: none">A holder of at least a Second Class Honours (Upper Division) degree in Food Science and Technology or any related field of TU-K or its equivalent from a university recognized by Senate of TU-K, ORA holder of Second Class Honours (Lower Division) degree in Food Science and Technology or any related field or equivalent from another university recognized by the Senate of TU-K with either at least two (2) years of relevant experience or a postgraduate diploma.	2 years
Doctor of Philosophy in Biodiversity Conservation					
Doctor of Philosophy in Aquaculture					
Doctor of Philosophy in Parasitology					
Doctor of Philosophy in Immunology					

PROGRAMME	ELIGIBILITY	DURATION
Master of Science in Genetics	<ul style="list-style-type: none">• <i>At least a Second Class Honours (Upper Division) degree in biological or a related field of TU-K or its equivalent from a university recognised by the Senate of TU-K OR</i>• <i>Second Class Honours (Lower Division) degree in biological or related field or its equivalent from a University recognised by the Senate of TU-K with either two (2) years relevant work experience OR a post-graduate diploma in a relevant field of biology.</i>	2 years
Master of Technology in Food Science and Technology	<ul style="list-style-type: none">• <i>A holder of at least a Second Class Honours (Upper Division) degree in Food Science and Technology or any related field of TU-K or its equivalent from a university recognized by Senate of TUK, OR</i>• <i>A holder of Second Class Honours (Lower Division) degree in Food Science and Technology or any related field or equivalent from another university recognized by the Senate of TU-K with either at least two (2) years of relevant experience or a postgraduate diploma.</i>	2 years
Master of Technology in Applied Parasitology	<ul style="list-style-type: none">• <i>A holder of at least a Second Class Honours (Upper Division) degree in Applied Biology, Science Laboratory Technology, Biology, Botany and Zoology, Zoology or any related field of TU-K or its equivalent from a university recognized by Senate of TUK, OR</i>• <i>A holder of Second Class Honours (Lower Division) degree in Applied Biology, Science Laboratory Technology, Biology, Botany and Zoology, Zoology or any related field or equivalent from another university recognized by the Senate of TU-K with either at least two (2) years of relevant experience or a postgraduate diploma.</i>	2 years
Department of Chemistry and Materials Science		
Doctor of Philosophy (Chemistry)	<ul style="list-style-type: none">• <i>A holder of a Master’s degree in any relevant field of Chemistry</i>	3 Years
Master of Technology in Analytical Chemistry	<ul style="list-style-type: none">• <i>A holder of at least a Second Class Honours (Upper Division), Bachelor’s degree in Industrial Chemistry, Analytical Chemistry, Chemistry, Chemical Engineering of TU-K or equivalent from another university recognised by the Senate OR</i>• <i>A holder of a Second Class Honours (Lower Division) Bachelor’s degree in Industrial Chemistry, Analytical Chemistry, Chemistry, Chemical Engineering of TU-K or equivalent from another university recognised by Senate with either at least two (2) years of relevant experience or a postgraduate diploma/certificate in Industrial Chemistry, Analytical Chemistry, Chemistry, Chemical Engineering and one (1) year of relevant work experience.</i>	2 years
Masters of Technology in Petroleum Chemistry	<ul style="list-style-type: none">• <i>At least a second class Honours (Upper Division) degree of TU-K in the relevant field or equivalent from a university recognized by the senate of TU-K OR</i>• <i>At least a Second Class Honours (Lower Division) degree of TU-K or equivalent from a university recognized by the senate of TU-K; with either at least two (2) years of relevant experience OR relevant Postgraduate Diploma with 1-year relevant work experience.</i>	2YRS
Master of Science in Computational Chemistry	<ul style="list-style-type: none">• <i>At least a second class Honours (Upper Division) degree of TU-K in the relevant field or equivalent from a university recognized by the senate of TU-K OR</i>• <i>At least a Second Class Honours (Lower Division) degree of TU-K or equivalent from a university recognized by the senate of TU-K; with either at least two (2) years of relevant experience OR relevant Postgraduate Diploma with 1 year relevant work experience.</i>	2YRS
Department of Computing and Information Technologies		
Master of Technology in Computer Technology	<ul style="list-style-type: none">• <i>At least a Second Class Honours (Upper Division) degree of TU-K in Computer Technology or equivalent from a university recognised by the Senate of TU-K OR</i>• <i>At least a Second Class Honours (Lower Division) degree of TU-K or equivalent from a university recognised by the Senate of TU-K; with either at least two (2) years of relevant experience OR relevant Postgraduate Diploma with 1 year relevant work experience.</i>	2 years
Master of Technology in Communication and Computer Networks		
Department of Health and Biomedical Sciences		
Doctor of Philosophy in Biomedical Science: Options <ul style="list-style-type: none">• <i>Medical Microbiology</i>• <i>Medical Immunology</i>• <i>Medical Parasitology</i>• <i>Clinical Haematology & Blood Transfusion Science</i>• <i>Clinical Chemistry</i>• <i>Clinical Histocytopathology</i>• <i>Medical Virology</i>	<ul style="list-style-type: none">• <i>A holder of Bachelor’s degree in relevant field</i>• <i>A holder of a Master’s degree in the relevant field</i>	6 semesters

PROGRAMME	ELIGIBILITY	DURATION
Doctor of Philosophy in Nutritional Sciences	<ul style="list-style-type: none">• <i>A holder of Bachelor’s degree in Human Nutrition and Dietetics, Public Health or relevant field</i>• <i>A holder of a Master’s degree in the relevant field</i>	6 semesters
Doctor of Philosophy in Public Health: (No Course Work, Research Based Only) Options <ul style="list-style-type: none">• <i>Epidemiology and Disease control</i>• <i>Epidemiology Informatics</i>• <i>Epidemiology and Biostatistics</i>• <i>Epidemiology Informatics</i>• <i>Health Systems Management</i>• <i>Health Economics</i>• <i>Environmental and Occupational Health</i>• <i>Population and Community Health</i>• <i>Health Records Management</i>	<ul style="list-style-type: none">• <i>A holder of Bachelor’s degree in relevant field</i>• <i>A holder of a Master’s degree in the relevant field</i>• <i>A holder of Tu-K postgraduate Certificate in Research Methods</i>	3 years
Doctor of Philosophy in Public Health: Options <ul style="list-style-type: none">• <i>Epidemiology and Disease control</i>• <i>Epidemiology Informatics</i>• <i>Epidemiology and Biostatistics</i>• <i>Epidemiology Informatics</i>• <i>Health Systems Management</i>• <i>Health Records Management</i>	<ul style="list-style-type: none">• <i>A holder of Bachelor’s degree in relevant field</i>• <i>A holder of a Master’s degree in the relevant field</i>	3 years
Master of Science in Medical Virology	<ul style="list-style-type: none">• <i>A holder of Bachelor’s degree in relevant field from a university recognised by the Senate of TU-K</i>	2 years
Master of Science in Community Nutrition	<ul style="list-style-type: none">• <i>At least a Second Class Honours (Upper Division) degree of TU-K in the relevant field or equivalent from a university recognised by the Senate of TU-K OR</i>• <i>At least a Second Class Honours (Lower Division) degree of TU-K or equivalent from a university recognised by the Senate of TU-K; with either at least two (2) years of relevant experience OR relevant Postgraduate Diploma with 1 year relevant work experience</i>	2 years
Master of Science in Medical Laboratory Science Options in <ul style="list-style-type: none">• <i>Medical Microbiology</i>• <i>Medical Immunology</i>• <i>Medical Parasitology</i>• <i>Clinical Haematology & Blood Transfusion Science</i>• <i>Clinical Chemistry</i>• <i>Clinical Histocytopathology</i>	<ul style="list-style-type: none">• <i>At least a Second Class Honours (Upper Division) degree of TU-K in the relevant field or equivalent from a university recognised by the Senate of TU-K OR</i>• <i>At least a Second Class Honours (Lower Division) degree of TU-K or equivalent from a university recognised by the Senate of TU-K; with either at least two (2) years of relevant experience OR relevant Postgraduate Diploma with 1 year relevant work experience</i>	2 years
Master of Public Health Options in <ul style="list-style-type: none">• <i>Health Systems Management and Finance</i>• <i>Population and Community Health</i>• <i>Epidemiology and Disease Control</i>• <i>Sexuality Studies and Human Health</i>• <i>Environmental and Occupational Health</i>	<ul style="list-style-type: none">• <i>At least a Second Class Honours (Upper Division) degree of TU-K in the relevant field or equivalent from a university recognised by the Senate of TU-K OR</i>• <i>At least a Second Class Honours (Lower Division) degree of TU-K or equivalent from a university recognised by the Senate of TU-K; with either at least two (2) years of relevant experience OR relevant Postgraduate Certificate with 12year relevant work experience</i>	2 years
Department of Mathematics and Statistics		
Master of Science in Applied Statistics	<ul style="list-style-type: none">• <i>A holder of at least a Second Class Honours (Upper Division), Bachelor’s degree in Statistics of TU-K; or equivalent from another university recognized by the Senate OR</i>• <i>A holder of a Second Class Honours (Lower Division) Bachelor’s degree in Statistics of TU-K, or equivalent from another university recognized by Senate with either at least two (2) years of relevant experience or a postgraduate diploma/certificate in Statistics and one (1) year of relevant work experience.</i>	2 years

PROGRAMME	ELIGIBILITY	DURATION
Master of Science in Mathematics (Pure or Applied Mathematics)	<ul style="list-style-type: none">• A holder of at least a Second Class Honours (Upper Division), Bachelor's degree in Mathematics of TU-K; or its equivalent from a university recognised by the Senate of TU-K, OR• A holder of a Second Class Honours (Lower Division) Bachelor's degree in Mathematics of TU-K, or equivalent from another university recognized by Senate with either at least two (2) years of relevant experience or a postgraduate diploma/certificate in Statistics and one (1) year of relevant work experience.	2 years
Department of Physics, Earth and Environmental Sciences		
Doctor of Philosophy (Environmental Resource Management)	<ul style="list-style-type: none">• A holder of a Master's degree in Environmental Resource Management	3 years
Doctor of Philosophy (Physics)	A holder of a Master's degree in any relevant field of Physics A holder of a Master's degree in Physics	3 years
Master of Technology in Integrated Water Resources Management	<ul style="list-style-type: none">• At least a Second Class Honours (Upper Division) degree of TU-K in the relevant field or equivalent from a university recognised by the Senate of TU-K OR• A holder of a Second Class Honours (Lower Division) Bachelor's degree of TU-K in the relevant field, or equivalent from another university recognized by Senate with either at least two (2) years of relevant experience OR a relevant postgraduate diploma/certificate and one (1) year of relevant work experience. RELATED FIELDS OF STUDY: Integrated Water Resources Management (IWRM); Hydrology & Water Resources; Geography Chemistry; Biology; Biochemistry; Environmental Sciences; Political Sciences; Law, Governance and Public Policy; Economics; Earth Sciences; Meteorology/Climate Sciences, Civil Engineering; Water & Environmental Engineering; Biosystems and Environmental Engineering; Geospatial Engineering; Agricultural Engineering; Mechanical Engineering; Electrical Engineering; etc.	Minimum 2 Years (Full Time) Maximum 4 Years
Master of Science (Physics)	<ul style="list-style-type: none">• At least a second class Honours (Upper Division) degree of TU-K in the relevant field or equivalent from a university recognized by the senate of TU-K OR• At least a Second Class Honours (Lower Division) degree of TU-K or equivalent from a university recognized by the senate of TU-K; with either at least two (2) years of relevant experience OR relevant Postgraduate Diploma with 1 year relevant work experience.	2 years
Master of Science (Medical Physics)		
Master of Technology in Environmental Resource Management		
Department of Architecture, Design and Planning		
Doctor of Philosophy in Urban and Regional Development	<ul style="list-style-type: none">• A holder of a Master's degree in Urban and regional developmnet or related area, from TU-K or any other institution accepted and recognised by Senate, or• A holder of a relevant Master's degree of Technical University of Kenya or of any other institution recognised by Senate• A holder of a relevant Bachelor's degree of TU-K or from any other university recognised by the Senate of TU-K	3 years
Master of Planning with specialization in: <ul style="list-style-type: none">• Metropolitan Planning & Urban Management• Urbanism & Design• Urban Conservation• Landscape Urbanism	<ul style="list-style-type: none">• A holder of at least a Second Class Honours (Upper Division), Bachelor's degree in Urban and Regional Planning or any related fields fromTU-K or any other institution recognised by the Senate of TU-K, OR• A holder of at least a Second Class Honors (Lower Division) degree in Urban and Regional Panning or any related fields and any other institution recognized by Senate of TU-K with either at least one year (1) or two (2) years relevant post-qualification experience.	2 years
Department of Civil and Resource Engineering		
Doctor of Philosophy in Civil Engineering	<ul style="list-style-type: none">• A holder of a Master's degree in Civil Engineering or related area, from TU-K or any other institution accepted and recognised by Senate, or• A holder of a relevant Master's degree of Technical University of Kenya or of any other institution recognised by Senate• A holder of a relevant Bachelor's degree of TU-K or from any other university recognised by the Senate of TU-K	2 years

PROGRAMME	ELIGIBILITY	DURATION
Master of Engineering in Civil Engineering	<ul style="list-style-type: none">• Holders of a Bachelor's degree qualification in Civil Engineering or Bachelor degree in Civil Engineering Technology or Bachelor of Philosophy in Civil Engineering with at least an Upper Second Class Honours from The Technical University of Kenya or any other institution accepted and recognized by the Senate and Commission of University Education;• Applicants with a lower Second Class Degree in the areas above must demonstrate at least two-year post-qualification work experience in a relevant field of Civil Engineering/Technology.	
Department of Construction and Property Studies		
Doctor of Philosophy in Construction Project Management	<ul style="list-style-type: none">• A holder of a Master's degree in Construction Project Management or related area, from TU-K or any other institution accepted and recognised by Senate, or• A holder of a relevant Master's degree of Technical University of Kenya or of any other institution recognised by Senate• A holder of a relevant Bachelor's degree of TU-K or from any other university recognised by the Senate of TU-K	3 years
Doctor of Philosophy in Real Estate and Property Management	<ul style="list-style-type: none">• A holder of a Master's degree in Real Estate Investment and Finance or related area, from TU-K or any other institution accepted and recognised by Senate, or• A holder of a relevant Master's degree of Technical University of Kenya or of any other institution recognised by Senate• A holder of a relevant Bachelor's degree of TU-K or from any other university recognised by the Senate of TU-K	3 years
Master of Construction Project Management	<ul style="list-style-type: none">• At least a second class Honours (Upper Division) degree of TU-K in the relevant field or equivalent from a university recognized by the senate of TU-K OR• At least a Second Class Honours (Lower Division) degree of TU-K or equivalent from a university recognized by the senate of TU-K; with either at least two (2) years of relevant industry experience OR relevant Postgraduate Diploma with 1-year relevant work experience	2 Years
Master of Real Estate Investment and Finance	<ul style="list-style-type: none">• At least a second class Honours (Upper Division) degree of TU-K in the relevant field or equivalent from a university recognized by the senate of TU-K OR• At least a Second Class Honours (Lower Division) degree of TU-K or equivalent from a university recognized by the senate of TU-K; with either at least two (2) years of relevant industry experience OR relevant Postgraduate Diploma with 1-year relevant work experience	2 Years
Department of Chemical and Biosystems Engineering		
Doctor of Philosophy Chemical Engineering	<ul style="list-style-type: none">• A holder of a Masters degree of TU-K in relevant field OR• A holder of a relevant Masters degree from another institution recognized by the Senate	3years
Department of Mechanical and Aerospace Engineering		
Doctor of Philosophy in Mechanical Engineering	<ul style="list-style-type: none">• Master of Science in Mechanical Engineering or Master of Engineering in Mechanical Engineering or any such qualification from TU-K or any other institution accepted and recognized by Senate	3-6 years
Master of Technology (Mechanical Engineering Technology)	<ul style="list-style-type: none">• At least a Second Class Honours (Upper Division) degree or its equivalent from a university recognised by the Senate of TU-K OR• Second Class Honours (Lower Division) degree or its equivalent in the relevant discipline with a Postgraduate diploma/certificate and 1 year of relevant work experience in the following areas: - i. Bachelor of Technology in Mechanical Engineering Technology ii. Bachelor of Philosophy in Mechanical Engineering Technology iii. BSc/B.Eng in Mechanical Engineering or its equivalent	2 years
Department of Electrical and Electronics Engineering		
Doctor of Philosophy in Electrical and Electronic Engineering (By Research)	<ul style="list-style-type: none">• A holder of a Master's degree in Electrical & Electronics from Technical University of Kenya, or• A holder of a relevant Master's degree from another institution recognised by the Senate of TU-K• A Bachelor's degree in a relevant field	3 years

PROGRAMME	ELIGIBILITY	DURATION
Master of Science in Electrical and Electronic Engineering	<ul style="list-style-type: none">• <i>At least a Second Class Honours (Upper Division) degree of TU-K in the relevant field or equivalent from a university recognised by the Senate of TU-K OR</i>• <i>A holder of a Second Class Honours (Lower Division) Bachelor’s degree of TU-K in the relevant field, or equivalent from another university recognized by Senate with either at least two (2) years of relevant experience OR a relevant postgraduate diploma/certificate and one (1) year of relevant work experience.</i>	2 years
Department of Surveying and Spatial Sciences		
Doctor of Philosophy in Geospatial Sciences	<ul style="list-style-type: none">• <i>A Master of Science degree in Geospatial Engineering, Geoinformatics, Geovisualisation, Geodesy Environmental Science of TU-K or equivalent from another university recognised by the Senate of TU-K</i>	3 years
Master of Science in Land Adminstration	<ul style="list-style-type: none">• <i>At least a Second Class Honours (Upper Division) degree of TU-K in the relevant field or equivalent from a university recognised by the Senate of TU-K OR</i>• <i>A holder of a Second Class Honours (Lower Division) Bachelor’s degree of TU-K in the relevant field, or equivalent from another university recognized by Senate with either at least two (2) years of relevant experience OR a relevant postgraduate diploma/certificate and one (1) year of relevant work experience.</i>	2 years
Department of Business and Management Studies		
Doctor of Philosophy in Business Administration: • <i>Accounting</i> • <i>Finance</i> • <i>Human Resource Management</i> • <i>Logistics and Supply Chain Management</i> • <i>Marketing Management</i> • <i>Strategic Management</i> • <i>Business Analytics</i> • <i>Information Systems and Technology Management</i> • <i>Operations Strategy and Management</i> • <i>International Trade and Business Management</i> • <i>Risk and Actuarial Science</i> • <i>Innovation and Entrepreneurship Management</i>	<ul style="list-style-type: none">• <i>A holder of a relevant Master’s degree of TU-K or of another university or institution recognized by Senate of TU-K; OR</i>• <i>A candidate enrolled for a Master’s Degree in TU-K for at least one year who has, to the satisfaction of the Senate, shown exceptional progress in the research work to merit upgrading.</i>	2 years
Postgraduate Diploma in Technical and Vocation Education	<ul style="list-style-type: none">• <i>A holder of at least a first degree of the Technical University of Kenya (TU-K) or equivalent from another recognized university or institution, or any other qualifications recognized by Senate.</i>	
Master of Arts in Entrepreneurship	<ul style="list-style-type: none">• <i>At least a Second Class Honours (Upper Division) degree of TU-K in the relevant field or equivalent from a university recognised by the Senate of TU-K OR</i>• <i>A holder of a Second Class Honours (Lower Division) Bachelor’s degree of TU-K in the relevant field, or equivalent from another university recognized by Senate with either at least two (2) years of relevant experience OR a relevant postgraduate diploma/certificate and one (1) year of relevant work experience.</i>	2 years
Master of Science in Entrepreneurship		
Master of Business Administration: • <i>Accounting</i> • <i>Finance</i> • <i>Human Resource Management</i> • <i>Logistics and Supply Chain Management</i> • <i>Marketing Management</i> • <i>Strategic Management</i> • <i>Business Analytics</i> • <i>Information Systems and Technology Management</i> • <i>Operations Strategy and Management</i> • <i>International Trade and Business Management</i> • <i>Risk and Actuarial Science</i> • <i>Innovation and Entrepreneurship Management</i>	<ul style="list-style-type: none">• <i>At least a Second Class Honours (Upper Division) degree of TU-K in the relevant field or equivalent from a university recognised by the Senate of TU-K OR</i>• <i>A holder of a Second Class Honours (Lower Division) Bachelor’s degree of TU-K in the relevant field, or equivalent from another university recognized by Senate with either at least two (2) years of relevant experience OR a relevant postgraduate diploma/certificate and one (1) year of relevant work experience.</i>	2 years

PROGRAMME	ELIGIBILITY	DURATION
Department of Creative Arts and Media		
Doctor of Philosophy in Design	<ul style="list-style-type: none">• <i>At least a Second Class Honours (Upper Division) degree of TU-K in the relevant field or equivalent from a university recognised by the Senate of TU-K OR</i>• <i>A holder of a Second Class Honours (Lower Division) Bachelor’s degree of TU-K in the relevant field, or equivalent from another university recognized by Senate with either at least two (2) years of relevant experience OR a relevant postgraduate diploma/certificate and one (1) year of relevant work experience.</i>	Minimum 4 years
Masters of Technology in Design and Interactive Media	<ul style="list-style-type: none">• <i>At least a Second Class Honours (Upper Division) degree of TU-K in the Bachelor of Technology in Design, Interactive Media, Computer Science, Information Technology or any related field or equivalent from a university recognised by the Senate of TU-K OR</i>• <i>A holder of a Second Class Honours (Lower Division) degree of TU-K in the Bachelor of Technology in Design, Interactive Media, Computer Science, Information Technology or any related field or equivalent from a university recognised by the Senate of TU-K with either at least two (2) years of relevant experience OR a relevant postgraduate diploma/certificate and one (1) year of relevant work experience.</i>	2 years
Master of Music in Music Education Or African Music Studies	<ul style="list-style-type: none">• <i>At least a Second Class Honours (Upper Division) degree of TU-K in the relevant field or equivalent from a university recognised by the Senate of TU-K OR</i>• <i>A holder of a Second Class Honours (Lower Division) Bachelor’s degree of TU-K in the relevant field, or equivalent from another university recognized by Senate with either at least two (2) years of relevant experience OR a relevant postgraduate diploma/certificate and one (1) year of relevant work experience.</i>	2 years
Master of Musical Arts in Composition Or Performance		2 years
Department of Information Science, Language and Communication Studies		
Doctor of Philosophy in Applied Linguistics (Course work, Examination and Research)	<ul style="list-style-type: none">• <i>A holder of a Master’s Degree of Technical University of Kenya in the relevant field; OR</i>• <i>A holder of a relevant Master’s Degree from another institution recognised by the Senate of TU-K, shown exceptional progress in the research work to merit upgrading,</i>• <i>A holder of Degree in the relevant field</i>	3 years
Doctor of Philosophy in Applied Linguistics (Research and Thesis)		
Doctor of Philosophy in Information and Knowledge Management (Course work, Examination and Research)		
Master of Applied Linguistics (Research and Thesis)	<ul style="list-style-type: none">• <i>At least a Second Class Honours (Upper Division) degree of TU-K in the relevant field or equivalent from a university recognised by the Senate of TU-K OR</i>• <i>A holder of a Second Class Honours (Lower Division) Bachelor’s degree of TU-K in the relevant field, or equivalent from another university recognized by Senate with either at least two (2) years of relevant experience OR a relevant postgraduate diploma/certificate and one (1) year of relevant work experience.</i>	2 years
Master of Applied Linguistics (Course Work, Examination and Research)		
Master of Science in Information and Knowledge Management		
Master of Science in Records and Archives Management	<ul style="list-style-type: none">• <i>At least a Second Class Honours (Upper Division) degree of TU-K in the relevant field or equivalent from a university recognised by the Senate of TU-K OR</i>• <i>A holder of a Second Class Honours (Lower Division) Bachelor’s degree of TU-K in the relevant field, or equivalent from another university recognized by Senate with either at least two (2) years of relevant experience OR a relevant postgraduate diploma/certificate and one (1) year of relevant work experience.</i>	2 years
Master of Science in Library and information Science		
Master of Science Knowledge Management		
Department of Liberal, Development and International Studies		
Doctor of Philosophy in Global Developments and Public Policy	<ul style="list-style-type: none">• <i>A holder of a Master’s Degree of Technical University of Kenya in the relevant field; OR</i>• <i>A holder of a relevant Master’s Degree from another institution recognised by the Senate of TU-K , shown exceptional progress in the research work to merit upgrading,</i>• <i>A holder of Degree in the relevant field</i>	3 years
Doctor of Philosophy in International Relations and Diplomacy		

PROGRAMME	ELIGIBILITY	DURATION
Master of Arts in International Relations	<ul style="list-style-type: none">• <i>At least a Second Class Honours (Upper Division) degree of TU-K in the relevant field or equivalent from a university recognised by the Senate of TU-K OR</i>• <i>A holder of a Second Class Honours (Lower Division) Bachelor's degree of TU-K in the relevant field, or equivalent from another university recognized by Senate with either at least two (2) years of relevant experience OR a relevant postgraduate diploma/certificate and one (1) year of relevant work experience.</i>	2 years
Master of Arts in Global Development and Public Policy		
Postgraduate Certificate in Research Methods	<ul style="list-style-type: none">• <i>A holder of at least a first degree of the Technical University of Kenya (TU-K) or equivalent from another recognized university or institution, or any other qualifications recognized by Senate.</i>	3 months
Department of Hospitality and Human Ecology		
Doctor of Philosophy in Tourism	<ul style="list-style-type: none">• <i>A holder of a Master's (Thesis Option) degree of TUK in Tourism Management or related field OR</i>• <i>A holder of a Master's (Non-Thesis Option) degree in Tourism Management or related field from TUK or another institution recognized by Senate</i>• <i>A holder of a Master's (Non-Thesis Option) degree in Tourism Management or related field from TUK or another institution recognized by Senate</i>	A Minimum of 3 Years

PROGRAMME	ELIGIBILITY	DURATION
Doctor of Philosophy in Fashion Design and Technology	<ul style="list-style-type: none">• <i>A relevant Master's degree of TU-K or of another university or institution recognized by Senate OR</i>• <i>A candidate enrolled for a Master's Degree in TU-K for at least one year who has, to the satisfaction of the Senate, shown exceptional progress in the research work to merit upgrading</i>	3 Years (Full-time) 7 Years (Part-time)
Doctor of Philosophy in Textile Technology	<ul style="list-style-type: none">• <i>A relevant Master's degree of TU-K or of another university or institution recognized by Senate OR</i>• <i>A candidate enrolled for a Master's Degree in TU-K for at least one year who has, to the satisfaction of the Senate, shown exceptional progress in the research work to merit upgrading</i>	3 Years (Full-time) 7 Years (Part-time)
Master of Science in Hospitality Management	<ul style="list-style-type: none">• <i>A minimum Second Class Honours (Upper Division) bachelor's degree from an institution recognized by Senate OR</i>• <i>Second Class Honours (Lower Division) bachelor's degree in the relevant disciplines with a Postgraduate certificate and 1 year of relevant work experience or at least 2 years of relevant work experience</i>	2 Years (Full Time)

The Director, School of Graduate and Advanced Studies | The Technical University of Kenya | P. O. Box 52428
– 00200, NAIROBI | Tel. +254 20 2219929, 3341639 • Fax: +254 (020) 2219689





THE TECHNICAL UNIVERSITY OF KENYA

ONLINE APPLICATION PROCEDURE:



Please note that applications must be submitted no later than **22nd August 2025**. Applicants are encouraged to regularly check the University website for any updates or possible extensions to the deadline.

Kindly note that all programmes under this intake are scheduled to commence on **1st September 2025**.

For enquiries or further clarification regarding the application process, please contact the Admissions Office via email at: admissions@students.tukenya.ac.ke or via telephone number +254 20 2982182.

Haile Selassie Avenue • P. O. Box 52428 – 00200, City Square, Nairobi • Tel. +254 20 2219929, 3341639 (General enquiries) • Fax: +254 (020) 2219689 • E-mail: registrar.academic@tukenya.ac.ke